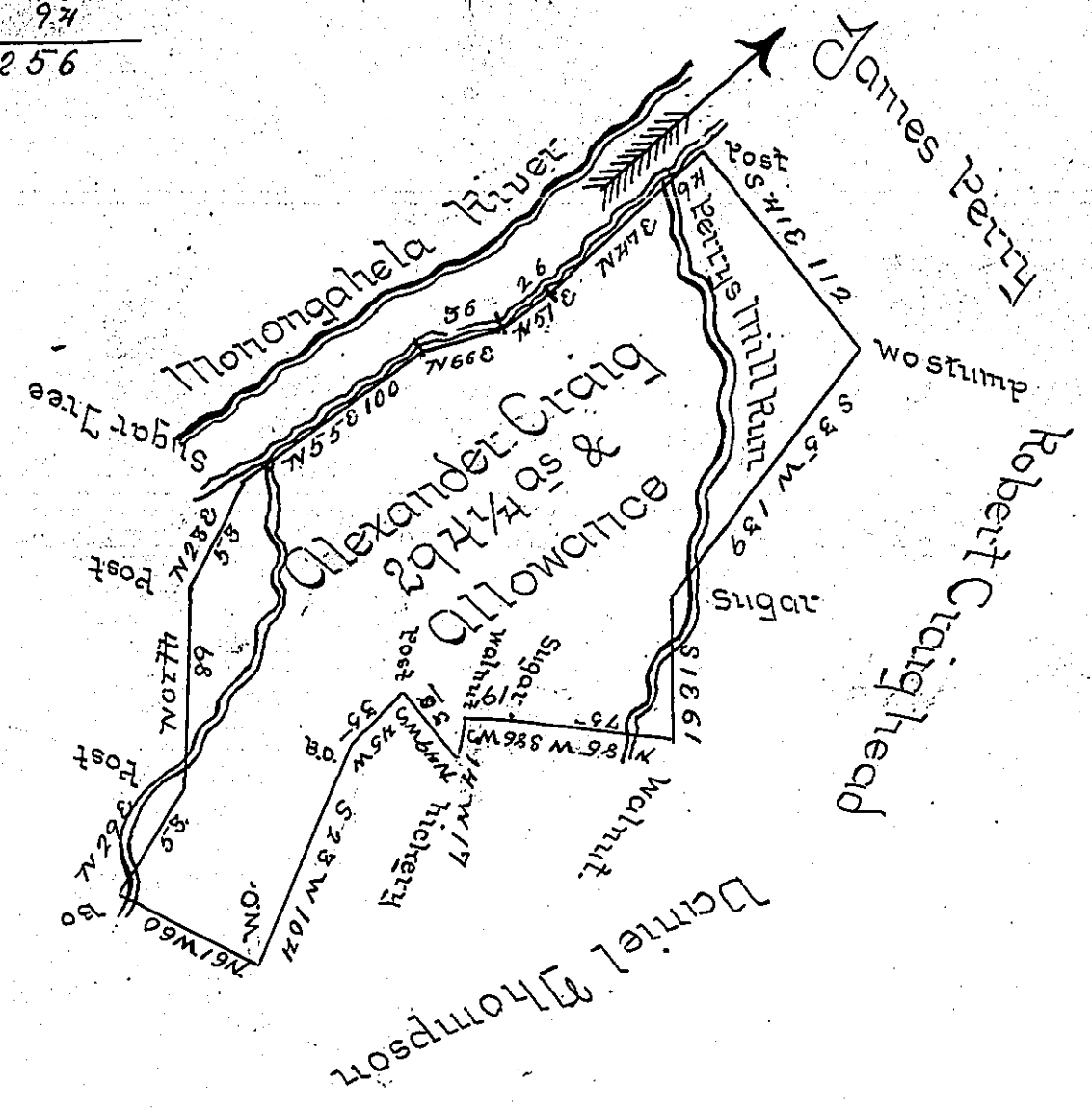


700
 36
 26
 97

 256

P-14-373



Situate on Perry's Mill Run and Monongahela River in Rostraver Township Westmoreland County and Surveyed the 1st Day of February 1785 In Pursuance of a Warrant Dated the 9th day of December 1784.

By Alexander McClean Dep.

To John Lukens Esquire }
 Surveyor General ~ }

IN TESTIMONY that the above is a copy of the original remaining on file in the Department of Internal Affairs of Pennsylvania, made conformably to an Act of Assembly approved the 16th day of February, 1833, I have hereunto set my Hand and caused the Seal of said Department to be affixed at Harrisburg, this first day of April 1900.

James W. Fatta
 Secretary of Internal Affairs.